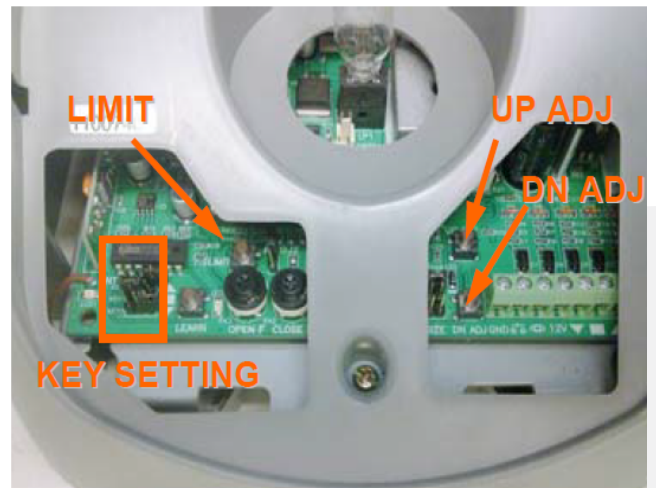


NGTS V2 SET DOOR TRAVEL LIMITS

The limits can be set directly on the power head, or by using the handset (transmitter).

1. Carefully remove the light cover by pulling down on tab at front of unit.
2. Press and hold LIMIT button for 3 seconds to begin limit setting mode. Unit will beep 3 times.
3. Raise the door to desired open position by pressing and holding UP ADJ button. To fine adjust this position use buttons UP & DN ADJ (if the door is already in desired opened position proceed to step 4).
4. Press LIMIT button once and release finger to confirm this position. Unit will beep twice to confirm the top position is set.
5. Lower to the door to closed position by pressing and holding DN ADJ button, fine adjust using buttons UP & DN ADJ. Ensure the door doesn't hit the ground hard, maintain 5mm gap between door and floor.
6. Press LIMIT button to set this position. Unit will beep twice to confirm limit is set. The door will automatically travel between the limits once.
7. Replace light cover.



Set using handset (transmitter)

1. Please ensure all 3 jumpers are on the Left side of Key Setting
2. Press and hold buttons 1 & 3 simultaneously. Hold for 3 seconds Reset
3. Raise the door to the open position using press and hold button 2. To adjust this position use buttons 2 & 3 (UP & DOWN). If the door is already in desired opened position proceed to step 4.
4. Press button 1 to confirm this position. Unit will beep twice to confirm the top position is set.
5. Lower the door to the closed position using press and hold button 3, adjust using buttons 2 & 3 (UP & DOWN).
6. Press button 1 to set this position. Unit will beep twice to confirm the closed position is set.
7. The door will automatically travel between the limits.

